



Location: CMA1b - Oil Street Site Office

Report on 24-hour TSP monitoring

Action Level ($\mu\text{g}/\text{m}^3$) - 176.7

Limit Level ($\mu\text{g}/\text{m}^3$) - 260

Date	Sampling Time	Weather Condition	Filter paper no.	Filter Weight, g		Elapse Time, hr		Sampling Time, hr	Flow Rate, m^3/min			Total Volume, m^3	TSP Level, $\mu\text{g}/\text{m}^3$
				Initial	Final	Initial	Final		Initial, Q_{si}	Final, Q_{sf}	Average		
29-Dec-14	8:00	Fine	010408	2.7607	2.8757	5650.47	5674.47	24.00	1.01	1.01	1.01	1457	78.9
3-Jan-15	8:00	Fine	010912	2.7728	2.9302	5677.47	5701.47	24.00	1.01	1.01	1.01	1452	108.0
9-Jan-15	8:00	Fine	010921	2.7352	2.9567	5704.47	5728.47	24.00	1.09	1.09	1.09	1574	140.7
15-Jan-15	8:00	Fine	010936	2.7486	2.9073	5731.47	5755.47	24.00	1.07	1.06	1.06	1533	103.5
21-Jan-15	8:00	Fine	010996	2.7584	3.1389	5758.47	5782.47	24.00	1.09	1.09	1.09	1569	242.5
27-Jan-15	8:00	Cloudy	010843	2.7644	2.9397	5785.47	5809.47	24.00	1.11	1.12	1.11	1605	109.2

Report on 1-hour TSP monitoring

Action Level ($\mu\text{g}/\text{m}^3$) - 320.1

Limit Level ($\mu\text{g}/\text{m}^3$) - 500

Date	Sampling Time	Weather Condition	Filter paper no.	Filter Weight, g		Elapse Time, hr		Sampling Time, hr	Flow Rate, m^3/min			Total Volume, m^3	TSP Level, $\mu\text{g}/\text{m}^3$
				Initial	Final	Initial	Final		Initial, Q_{si}	Final, Q_{sf}	Average		
30-Dec-14	8:12	Fine	010411	2.7782	2.7838	5674.47	5675.47	1.00	1.07	1.07	1.07	64	87.6
30-Dec-14	9:25	Fine	010906	2.7743	2.7783	5675.47	5676.47	1.00	1.07	1.07	1.07	64	62.6
30-Dec-14	10:30	Fine	010909	2.7608	2.7678	5676.47	5677.47	1.00	1.07	1.07	1.07	64	109.5
5-Jan-15	8:15	Cloudy	010403	2.7609	2.7703	5701.47	5702.47	1.00	1.06	1.06	1.06	63	148.0
5-Jan-15	9:20	Cloudy	010405	2.7789	2.7896	5702.47	5703.47	1.00	1.06	1.06	1.06	63	169.0
5-Jan-15	10:31	Cloudy	010919	2.7564	2.7655	5703.47	5704.47	1.00	1.06	1.06	1.06	63	144.0
10-Jan-15	8:06	Fine	010923	2.7405	2.7545	5728.47	5729.47	1.00	1.12	1.12	1.12	67	208.4
10-Jan-15	9:10	Fine	010924	2.7483	2.7634	5729.47	5730.47	1.00	1.12	1.12	1.12	67	224.8
10-Jan-15	10:26	Fine	010926	2.7573	2.7693	5730.47	5731.47	1.00	1.12	1.12	1.12	67	178.6
16-Jan-15	8:14	Fine	010942	2.7503	2.7620	5755.47	5756.47	1.00	1.06	1.06	1.06	64	183.5
16-Jan-15	9:20	Fine	010992	2.7577	2.7644	5456.47	5457.47	1.00	1.06	1.06	1.06	64	105.1
16-Jan-15	10:33	Fine	010994	2.7496	2.7551	5457.47	5458.47	1.00	1.06	1.06	1.06	64	86.2
22-Jan-15	8:11	Fine	010849	2.7818	2.7888	5782.47	5783.47	1.00	1.06	1.06	1.06	64	109.8
22-Jan-15	9:18	Fine	010839	2.7803	2.7915	5783.47	5784.47	1.00	1.06	1.06	1.06	64	175.6
22-Jan-15	10:29	Fine	010841	2.7828	2.7928	5784.47	5785.47	1.00	1.06	1.06	1.06	64	156.8
28-Jan-15	8:06	Cloudy	010998	2.7588	2.7647	5809.47	5810.47	1.00	1.12	1.12	1.12	67	88.2
28-Jan-15	9:12	Cloudy	011000	2.7640	2.7691	5810.47	5811.47	1.00	1.12	1.12	1.12	67	76.2
28-Jan-15	10:25	Cloudy	011002	2.7671	2.7763	5811.47	5812.47	1.00	1.12	1.12	1.12	67	137.5



Location: CMA2a - Causeway Bay Community Centre

Report on 24-hour TSP monitoring
Action Level ($\mu\text{g}/\text{m}^3$) - 169.5
Limit Level ($\mu\text{g}/\text{m}^3$) - 260

Date	Sampling Time	Weather Condition	Filter paper no.	Filter Weight, g		Elapse Time, hr		Sampling Time, hr	Flow Rate, m^3/min			Total Volume, m^3	TSP Level, $\mu\text{g}/\text{m}^3$
				Initial	Final	Initial	Final		Initial, Q_{si}	Final, Q_{sf}	Average		
29-Dec-14	8:00	Fine	010409	2.7840	2.8740	15359.71	15383.71	24.00	1.03	1.03	1.03	1480	60.8
3-Jan-15	8:00	Fine	010911	2.7556	2.9144	15386.71	15410.71	24.00	1.09	1.08	1.09	1565	101.0
9-Jan-15	8:00	Fine	010922	2.7533	2.8671	15413.71	15437.71	24.00	0.96	0.96	0.96	1386	82.1
15-Jan-15	8:00	Fine	010937	2.7434	2.8550	15440.71	15464.71	24.00	1.09	1.09	1.09	1569	71.1
21-Jan-15	8:00	Fine	010997	2.7656	3.0959	15467.71	15491.71	24.00	1.12	1.12	1.12	1611	205.0
27-Jan-15	8:00	Cloudy	010844	2.7657	2.9422	15494.71	15518.71	24.00	0.99	1.02	1.00	1446	122.1

Report on 1-hour TSP monitoring
Action Level ($\mu\text{g}/\text{m}^3$) - 323.4
Limit Level ($\mu\text{g}/\text{m}^3$) - 500

Date	Sampling Time	Weather Condition	Filter paper no.	Filter Weight, g		Elapse Time, hr		Sampling Time, hr	Flow Rate, m^3/min			Total Volume, m^3	TSP Level, $\mu\text{g}/\text{m}^3$
				Initial	Final	Initial	Final		Initial, Q_{si}	Final, Q_{sf}	Average		
30-Dec-14	8:03	Fine	010410	2.7750	2.7864	15383.71	15384.71	1.00	1.03	1.03	1.03	62	185.2
30-Dec-14	9:15	Fine	010905	2.7638	2.7743	15384.71	15385.71	1.00	1.09	1.09	1.09	65	160.5
30-Dec-14	10:20	Fine	010908	2.7714	2.7800	15385.71	15386.71	1.00	1.09	1.09	1.09	65	131.5
5-Jan-15	8:03	Cloudy	010404	2.7789	2.7896	15410.71	15411.71	1.00	1.08	1.08	1.08	65	165.0
5-Jan-15	9:10	Cloudy	010918	2.7681	2.7806	15412.71	15413.71	1.00	1.08	1.08	1.08	65	193.0
5-Jan-15	10:25	Cloudy	010920	2.7409	2.7510	15413.71	15414.71	1.00	1.08	1.08	1.08	65	156.0
10-Jan-15	8:03	Fine	010935	2.7521	2.7713	15437.71	15438.71	1.00	1.03	1.03	1.03	62	311.9
10-Jan-15	9:08	Fine	010925	2.7516	2.7702	15438.71	15439.71	1.00	1.03	1.03	1.03	62	302.2
10-Jan-15	10:15	Fine	010927	2.7574	2.7697	15439.71	15440.71	1.00	1.03	1.03	1.03	62	199.8
16-Jan-15	8:03	Fine	010934	2.7366	2.7423	15464.71	15465.71	1.00	1.09	1.09	1.09	65	87.4
16-Jan-15	9:06	Fine	010993	2.7486	2.7593	15465.71	15466.71	1.00	1.09	1.09	1.09	65	164.0
16-Jan-15	10:13	Fine	010995	2.7568	2.7661	15466.71	15467.71	1.00	1.09	1.09	1.09	65	142.5
22-Jan-15	8:06	Fine	010838	2.7822	2.7951	15491.71	15492.71	1.00	1.12	1.12	1.12	67	192.1
22-Jan-15	9:13	Fine	010840	2.7881	2.8045	15492.71	15493.71	1.00	1.09	1.09	1.09	65	251.4
22-Jan-15	10:22	Fine	010842	2.7656	2.7797	15493.71	15494.71	1.00	1.09	1.09	1.09	65	216.1
28-Jan-15	8:09	Cloudy	010999	2.7692	2.7750	15518.71	15519.71	1.00	1.02	1.02	1.02	61	94.6
28-Jan-15	9:14	Cloudy	011001	2.7564	2.7590	15519.71	15520.71	1.00	1.02	1.02	1.02	61	42.4
28-Jan-15	10:21	Cloudy	011003	2.7709	2.7786	15520.71	15521.71	1.00	1.02	1.02	1.02	61	125.6



Location: CMA3a - CWB PRE Site Office Area

Report on 24-hour TSP monitoring
Action Level ($\mu\text{g}/\text{m}^3$) - 171
Limit Level ($\mu\text{g}/\text{m}^3$) - 260

Date	Sampling Time	Weather Condition	Filter paper no.	Filter Weight, g		Elapse Time, hr		Sampling Time, hr	Flow Rate, m^3/min			Total Volume, m^3	TSP Level, $\mu\text{g}/\text{m}^3$
				Initial	Final	Initial	Final		Initial, Q_{si}	Final, Q_{sf}	Average		
29-Dec-14	8:00	Fine	010815	2.7835	2.9282	2779.55	2803.55	24.00	1.23	1.23	1.23	1777	81.4
3-Jan-15	8:00	Fine	010979	2.7559	2.9059	2806.56	2830.56	24.00	1.23	1.23	1.23	1772	85.0
9-Jan-15	8:00	Fine	010615	2.8030	3.0266	2833.56	2857.56	24.00	1.14	1.14	1.14	1641	136.2
15-Jan-15	8:00	Fine	011035	2.7214	2.8550	2860.55	2884.55	24.00	1.23	1.23	1.23	1775	75.3
21-Jan-15	8:00	Fine	010893	2.7653	2.9373	2887.56	2911.56	24.00	1.18	1.18	1.18	1705	100.9
28-Jan-15	17:15	Cloudy	011058	2.7412	2.9264	2939.26	2963.26	24.00	1.18	1.18	1.18	1700	108.9

Remarks: Due to interruption of electricity, the 24hr TSP was rescheduled from 27 January 2015 to 28 January 2015.

Report on 1-hour TSP monitoring
Action Level ($\mu\text{g}/\text{m}^3$) - 311.3
Limit Level ($\mu\text{g}/\text{m}^3$) - 500

Date	Sampling Time	Weather Condition	Filter paper no.	Filter Weight, g		Elapse Time, hr		Sampling Time, hr	Flow Rate, m^3/min			Total Volume, m^3	TSP Level, $\mu\text{g}/\text{m}^3$
				Initial	Final	Initial	Final		Initial, Q_{si}	Final, Q_{sf}	Average		
30-Dec-14	9:19	Fine	010973	2.7528	2.7571	2803.55	2804.55	1.00	1.18	1.18	1.18	71	60.9
30-Dec-14	10:23	Fine	010975	2.7553	2.7599	2804.55	2805.55	1.00	1.18	1.18	1.18	71	65.1
30-Dec-14	13:00	Fine	010977	2.7613	2.7655	2805.55	2806.55	1.00	1.18	1.18	1.18	71	59.4
5-Jan-15	10:50	Cloudy	010612	2.7340	2.7427	2830.56	2831.56	1.00	1.23	1.23	1.23	74	118.0
5-Jan-15	14:40	Cloudy	010614	2.8047	2.8101	2831.56	2832.56	1.00	1.23	1.23	1.23	74	73.0
5-Jan-15	15:50	Cloudy	010622	2.7882	2.7957	2832.56	2833.56	1.00	1.23	1.23	1.23	74	102.0
10-Jan-15	13:00	Fine	011026	2.7134	2.7199	2857.56	2858.56	1.00	1.18	1.18	1.18	71	92.0
10-Jan-15	14:18	Fine	011028	2.7482	2.7541	2858.56	2859.56	1.00	1.18	1.18	1.18	71	83.5
10-Jan-15	15:30	Fine	011030	2.7344	2.7506	2859.56	2860.56	1.00	1.18	1.18	1.18	71	229.3
16-Jan-15	9:08	Fine	011037	2.7225	2.7245	2884.55	2885.55	1.00	1.18	1.18	1.18	71	28.4
16-Jan-15	10:13	Fine	011039	2.7404	2.7424	2885.55	2886.55	1.00	1.18	1.18	1.18	71	28.4
16-Jan-15	13:00	Fine	010837	2.7830	2.8037	2886.55	2887.55	1.00	1.18	1.18	1.18	71	293.6
22-Jan-15	9:08	Fine	010894	2.7666	2.7753	2911.56	2912.56	1.00	1.26	1.26	1.26	76	114.9
22-Jan-15	10:12	Fine	010896	2.7685	2.7704	2912.56	2913.56	1.00	1.12	1.12	1.12	67	28.3
22-Jan-15	13:00	Fine	010898	2.7627	2.7712	2913.56	2914.56	1.00	1.26	1.26	1.26	76	112.2
28-Jan-15	9:50	Cloudy	011054	2.7493	2.7559	2936.23	2937.26	1.03	1.17	1.17	1.17	73	91.0
28-Jan-15	14:55	Cloudy	011056	2.7585	2.7674	2637.26	2638.26	1.00	1.17	1.17	1.17	70	126.4
28-Jan-15	16:00	Cloudy	011057	2.7331	2.7400	2638.26	2639.26	1.00	1.17	1.17	1.17	70	98.0



Location: CMA4a - SPCA

Report on 24-hour TSP monitoring
Action Level ($\mu\text{g}/\text{m}^3$) - 171.2
Limit Level ($\mu\text{g}/\text{m}^3$) - 260

Date	Sampling Time	Weather Condition	Filter paper no.	Filter Weight, g		Elapse Time, hr		Sampling Time, hr	Flow Rate, m^3/min			Total Volume, m^3	TSP Level, $\mu\text{g}/\text{m}^3$
				Initial	Final	Initial	Final		Initial, Q_{si}	Final, Q_{sf}	Average		
29-Dec-14	8:00	Fine	010814	2.7839	2.9294	19616.23	19640.23	24.00	1.19	1.19	1.19	1710	85.1
3-Jan-15	8:00	Fine	010978	2.7480	2.8878	19643.24	19667.24	24.00	1.19	1.18	1.18	1705	82.0
9-Jan-15	8:00	Fine	010610	2.8068	3.0333	19670.24	19694.24	24.00	1.19	1.19	1.19	1709	132.6
15-Jan-15	8:00	Fine	011036	2.7268	2.8835	19697.24	19721.24	24.00	1.19	1.18	1.19	1708	91.8
21-Jan-15	8:00	Fine	010892	2.7721	3.1861	19724.24	19748.24	24.00	1.18	1.18	1.18	1705	242.8
27-Jan-15	8:00	Cloudy	010870	2.7869	2.9448	19751.24	19775.24	24.00	1.18	1.18	1.18	1702	92.8

Report on 1-hour TSP monitoring
Action Level ($\mu\text{g}/\text{m}^3$) - 312.5
Limit Level ($\mu\text{g}/\text{m}^3$) - 500

Date	Sampling Time	Weather Condition	Filter paper no.	Filter Weight, g		Elapse Time, hr		Sampling Time, hr	Flow Rate, m^3/min			Total Volume, m^3	TSP Level, $\mu\text{g}/\text{m}^3$
				Initial	Final	Initial	Final		Initial, Q_{si}	Final, Q_{sf}	Average		
30-Dec-14	9:07	Fine	010972	2.7520	2.7581	19640.24	19641.24	1.00	1.14	1.14	1.14	68	89.2
30-Dec-14	10:11	Fine	010974	2.7484	2.7530	19641.24	19642.24	1.00	1.19	1.19	1.19	71	64.6
30-Dec-14	13:00	Fine	010976	2.7493	2.7541	19642.24	19643.24	1.00	1.14	1.14	1.14	68	70.2
5-Jan-15	10:40	Cloudy	010623	2.7811	2.7870	19667.24	19668.24	1.00	1.18	1.18	1.18	71	83.0
5-Jan-15	14:25	Cloudy	010613	2.7325	2.7410	19668.24	19669.24	1.00	1.18	1.18	1.18	71	120.0
5-Jan-15	15:45	Cloudy	010621	2.7870	2.7939	19669.24	19670.24	1.00	1.18	1.18	1.18	71	98.0
10-Jan-15	13:00	Fine	011025	2.7407	2.7478	19694.24	19695.24	1.00	1.23	1.23	1.23	74	96.0
10-Jan-15	14:06	Fine	011027	2.7441	2.7517	19695.24	19696.24	1.00	1.23	1.23	1.23	74	102.7
10-Jan-15	15:20	Fine	011029	2.7428	2.7585	19696.24	19697.24	1.00	1.23	1.23	1.23	74	212.3
16-Jan-15	9:20	Fine	011038	2.7193	2.7261	19721.24	19722.24	1.00	1.18	1.18	1.18	71	95.7
16-Jan-15	10:25	Fine	011040	2.7335	2.7401	19722.24	19723.24	1.00	1.18	1.18	1.18	71	92.9
16-Jan-15	13:00	Fine	011043	2.7233	2.7370	19723.24	19724.24	1.00	1.18	1.18	1.18	71	192.8
22-Jan-15	9:20	Fine	010895	2.7411	2.7496	19748.24	19749.24	1.00	1.14	1.14	1.14	68	124.5
22-Jan-15	10:31	Fine	010897	2.7873	2.7957	19749.24	19750.24	1.00	1.14	1.14	1.14	68	123.1
22-Jan-15	13:00	Fine	010899	2.7749	2.7862	19750.24	19751.24	1.00	1.14	1.14	1.14	68	165.6
28-Jan-15	9:40	Cloudy	011044	2.7274	2.7334	19775.24	19776.24	1.00	1.18	1.18	1.18	71	84.5
28-Jan-15	14:40	Cloudy	011055	2.7656	2.7772	19776.24	19777.24	1.00	1.18	1.18	1.18	71	163.5
28-Jan-15	15:50	Cloudy	011045	2.7408	2.7452	19777.24	19778.24	1.00	1.18	1.18	1.18	71	62.0



Location: CMA5b - Pedestrian Plaza

Report on 24-hour TSP monitoring

Action Level ($\mu\text{g}/\text{m}^3$) - 181
Limit Level ($\mu\text{g}/\text{m}^3$) - 260

Date	Sampling Time	Weather Condition	Filter paper no.	Filter Weight, g		Elapse Time, hr		Sampling Time, hr	Flow Rate, m^3/min			Total Volume, m^3	TSP Level, $\mu\text{g}/\text{m}^3$
				Initial	Final	Initial	Final		Initial, Q_{si}	Final, Q_{sf}	Average		
29-Dec-14	8:00	Fine	010831	2.7848	2.9423	4088.55	4112.55	24.00	1.08	1.08	1.08	1554	101.3
3-Jan-15	8:00	Fine	010965	2.7891	2.9619	4115.55	4139.55	24.00	0.95	0.94	0.94	1357	127.0
9-Jan-15	8:00	Fine	010834	2.7880	2.9674	4142.55	4166.55	24.00	0.95	0.95	0.95	1363	131.6
15-Jan-15	8:00	Fine	010941	2.7576	2.9673	4169.55	4193.55	24.00	1.01	1.01	1.01	1456	144.0
21-Jan-15	8:00	Fine	010886	2.7846	3.2095	4196.55	4220.55	24.00	1.07	1.07	1.07	1547	274.6
27-Jan-15	8:00	Cloudy	010901	2.7762	2.9751	4223.55	4247.55	24.00	1.04	1.04	1.04	1495	133.0

Report on 1-hour TSP monitoring

Action Level ($\mu\text{g}/\text{m}^3$) - 332
Limit Level ($\mu\text{g}/\text{m}^3$) - 500

Date	Sampling Time	Weather Condition	Filter paper no.	Filter Weight, g		Elapse Time, hr		Sampling Time, hr	Flow Rate, m^3/min			Total Volume, m^3	TSP Level, $\mu\text{g}/\text{m}^3$
				Initial	Final	Initial	Final		Initial, Q_{si}	Final, Q_{sf}	Average		
30-Dec-14	8:38	Fine	010950	2.7621	2.7703	4112.55	4113.55	1.00	0.95	0.95	0.95	57	144.5
30-Dec-14	9:43	Fine	010971	2.7461	2.7508	4113.55	4114.55	1.00	0.95	0.95	0.95	57	82.8
30-Dec-14	10:49	Fine	010968	2.7814	2.7858	4114.55	4115.55	1.00	0.95	0.95	0.95	57	77.5
5-Jan-15	9:23	Cloudy	010964	2.7697	2.7747	4139.55	4140.55	1.00	0.93	0.93	0.93	56	89.0
5-Jan-15	10:26	Cloudy	010957	2.7761	2.7879	4140.55	4141.55	1.00	0.93	0.93	0.93	56	210.0
5-Jan-15	13:00	Cloudy	010954	2.7697	2.7784	4141.55	4142.55	1.00	0.93	0.93	0.93	56	155.0
10-Jan-15	9:34	Fine	010835	2.7876	2.7981	4166.56	4167.56	1.00	0.95	0.95	0.95	57	185.0
10-Jan-15	13:00	Fine	011024	2.7405	2.7505	4167.56	4168.56	1.00	0.95	0.95	0.95	57	176.2
10-Jan-15	14:05	Fine	010938	2.7519	2.7717	4168.56	4169.56	1.00	1.01	1.01	1.01	61	326.2
16-Jan-15	8:04	Fine	010991	2.7571	2.7676	4193.55	4194.55	1.00	1.01	1.01	1.01	61	173.4
16-Jan-15	13:00	Fine	010848	2.7718	2.7886	4194.55	4195.55	1.00	1.01	1.01	1.01	61	277.5
16-Jan-15	15:00	Fine	011022	2.7247	2.7330	4195.55	4196.55	1.00	1.01	1.01	1.01	61	137.1
22-Jan-15	13:00	Fine	010876	2.7591	2.7768	4220.55	4221.55	1.00	1.07	1.07	1.07	64	274.5
22-Jan-15	14:12	Fine	010879	2.7704	2.7837	4221.55	4222.55	1.00	1.01	1.01	1.01	61	219.7
22-Jan-15	15:16	Fine	010882	2.7755	2.7852	4222.55	4223.55	1.00	0.94	0.94	0.94	57	171.4
28-Jan-15	9:40	Cloudy	010850	2.7874	2.8007	4247.55	4248.55	1.00	1.01	1.01	1.01	60	220.1
28-Jan-15	10:43	Cloudy	010853	2.7727	2.7789	4248.55	4249.55	1.00	1.01	1.01	1.01	60	102.6
28-Jan-15	13:00	Cloudy	010856	2.7751	2.7904	4249.55	4250.55	1.00	1.01	1.01	1.01	60	253.2



Location: CMA6a - WD2 PRE Office

Report on 24-hour TSP monitoring

Action Level - 187.3 $\mu\text{g}/\text{m}^3$
Limit Level - 260 $\mu\text{g}/\text{m}^3$

Date	Sampling Time	Weather Condition	Filter paper no.	Filter Weight, g		Elapse Time, hr		Sampling Time, hr	Flow Rate, m^3/min			Total Volume, m^3	TSP Level, $\mu\text{g}/\text{m}^3$
				Initial	Final	Initial	Final		Initial, Q_{si}	Final, Q_{sf}	Average		
29-Dec-14	8:00	Fine	010828	2.7614	2.8780	19191.70	19215.70	24.00	1.17	1.17	1.17	1681	69.3
3-Jan-15	8:00	Fine	010967	2.7575	2.8719	19218.71	19242.71	24.00	1.27	1.26	1.27	1822	63.0
9-Jan-15	8:00	Fine	010953	2.7708	2.8795	19245.71	19269.71	24.00	1.24	1.23	1.24	1779	61.1
15-Jan-15	8:00	Fine	010929	2.7460	2.8734	19272.71	19296.71	24.00	1.24	1.23	1.23	1777	71.7
21-Jan-15	8:00	Fine	010885	2.7699	3.0828	19299.71	19323.71	24.00	1.16	1.16	1.16	1675	186.8
27-Jan-15	8:00	Cloudy	010883	2.7856	2.9245	19326.71	19350.71	24.00	1.19	1.20	1.19	1720	80.8

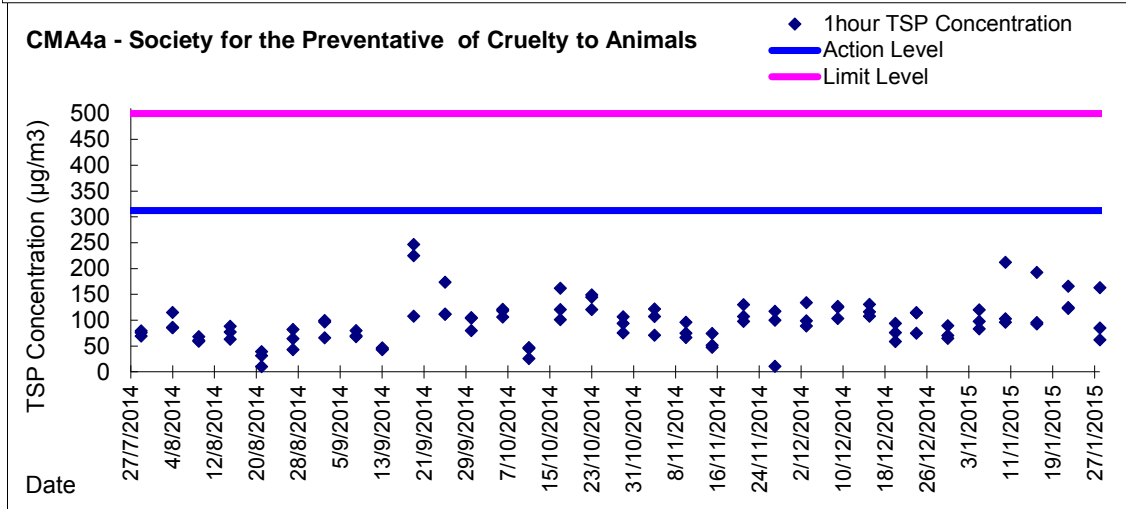
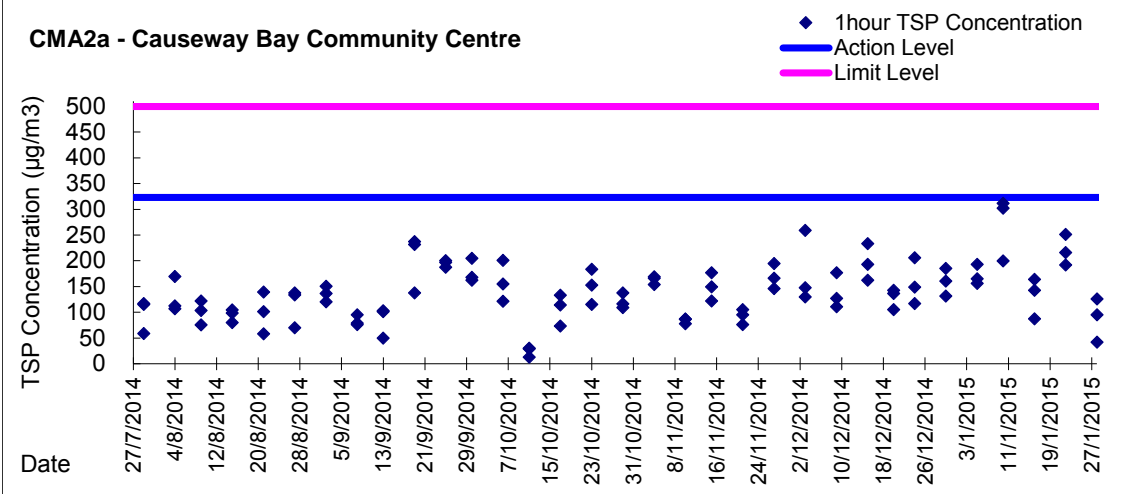
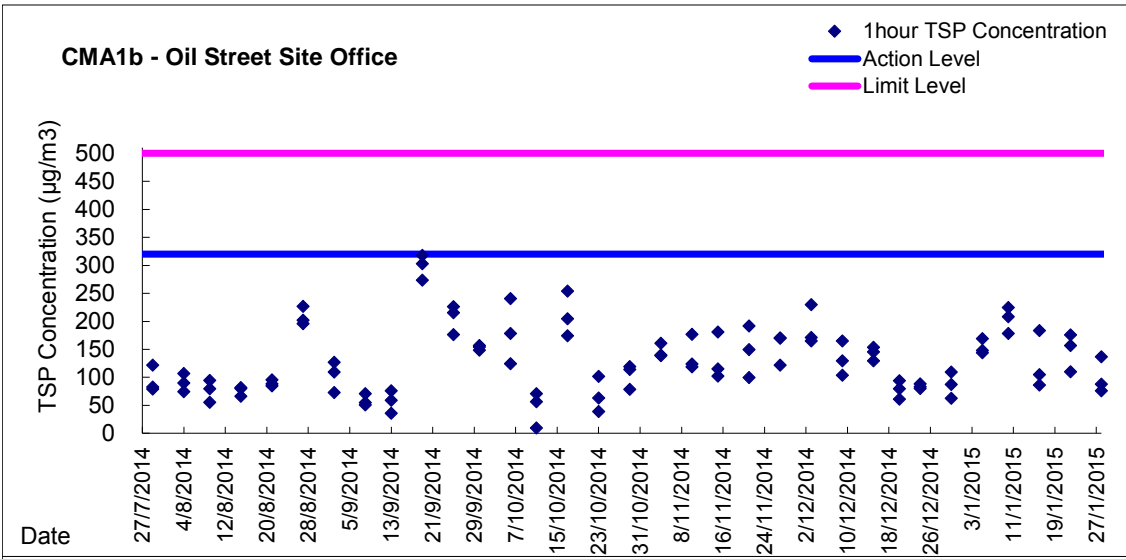
Report on 1-hour TSP monitoring

Action Level - 300.1 $\mu\text{g}/\text{m}^3$
Limit Level - 500 $\mu\text{g}/\text{m}^3$

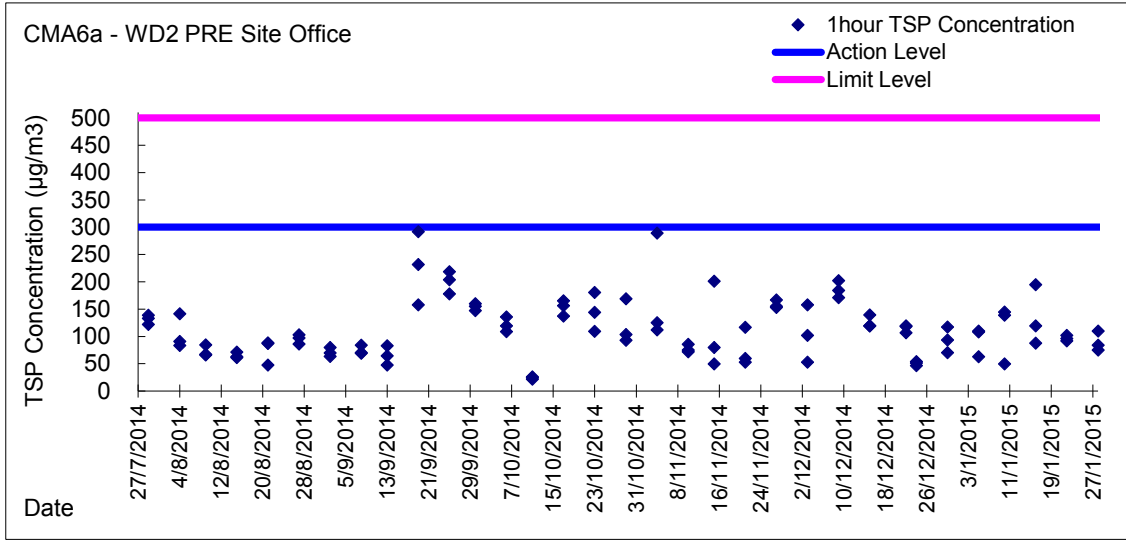
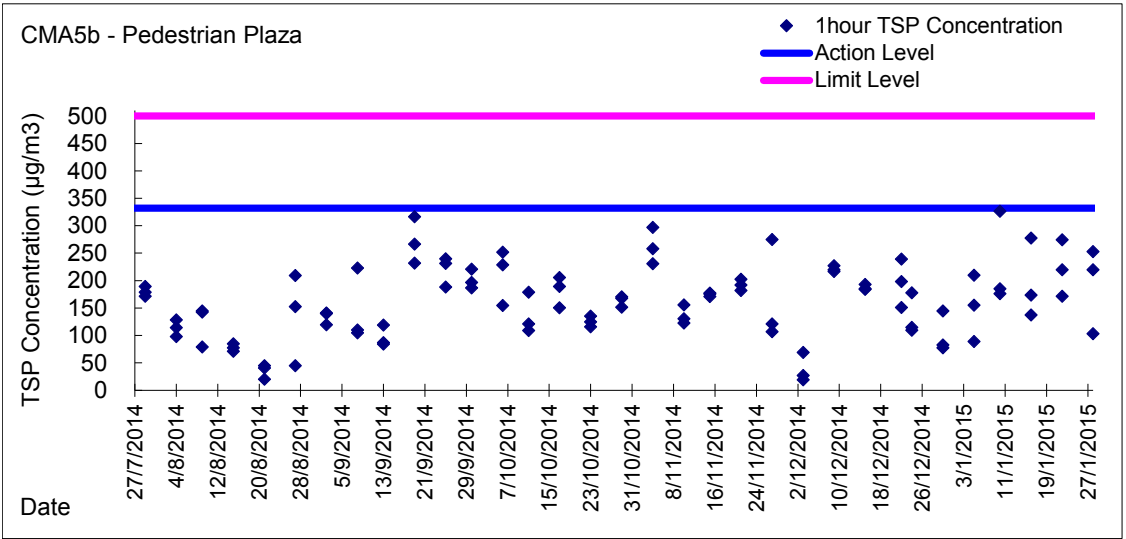
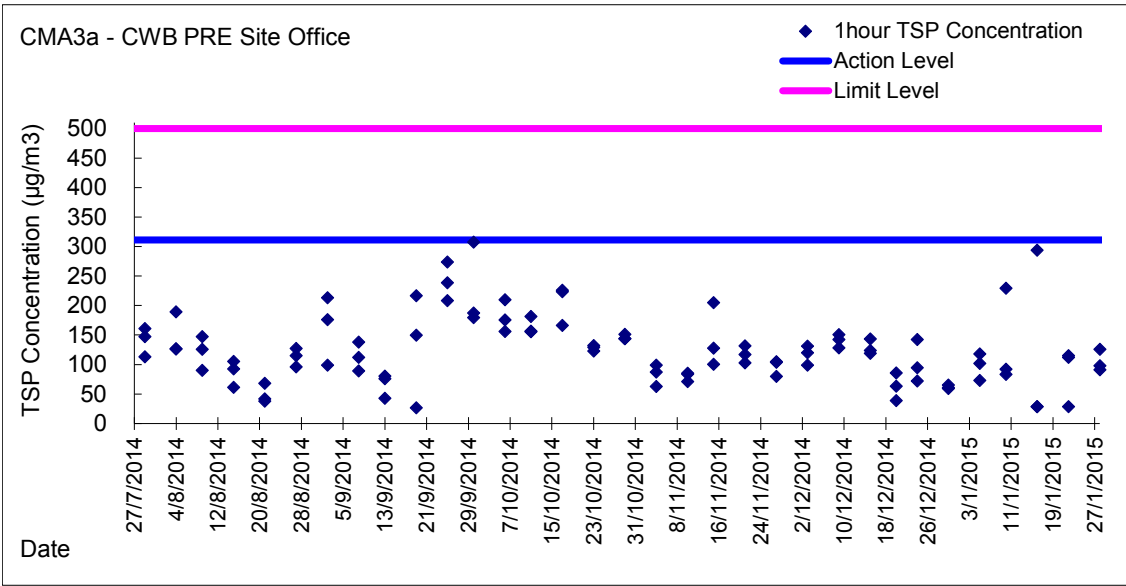
Date	Sampling Time	Weather Condition	Filter paper no.	Filter Weight, g		Elapse Time, hr		Sampling Time, hr	Flow Rate, m^3/min			Total Volume, m^3	TSP Level, $\mu\text{g}/\text{m}^3$
				Initial	Final	Initial	Final		Initial, Q_{si}	Final, Q_{sf}	Average		
30-Dec-14	8:21	Fine	010830	2.7855	2.7937	19215.70	19216.70	1.00	1.17	1.17	1.17	70	117.2
30-Dec-14	9:25	Fine	010951	2.7546	2.7619	19216.70	19217.70	1.00	1.30	1.30	1.30	78	93.3
30-Dec-14	10:32	Fine	010970	2.7538	2.7587	19217.70	19218.70	1.00	1.17	1.17	1.17	70	70.0
5-Jan-15	9:07	Cloudy	010959	2.7863	2.7947	19242.71	19243.71	1.00	1.29	1.29	1.29	77	108.0
5-Jan-15	10:11	Cloudy	010962	2.7658	2.7739	19243.71	19244.71	1.00	1.22	1.22	1.22	73	110.0
5-Jan-15	13:00	Cloudy	010956	2.7703	2.7752	19244.71	19245.71	1.00	1.29	1.29	1.29	77	63.0
10-Jan-15	9:14	Fine	011019	2.7251	2.7354	19269.71	19270.71	1.00	1.23	1.23	1.23	74	139.0
10-Jan-15	13:00	Fine	010836	2.7845	2.7882	19270.71	19271.71	1.00	1.23	1.23	1.23	74	49.9
10-Jan-15	14:05	Fine	010940	2.7617	2.7724	19271.71	19272.71	1.00	1.23	1.23	1.23	74	144.4
16-Jan-15	8:09	Fine	010933	2.7490	2.7551	19296.71	19297.71	1.00	1.16	1.16	1.16	70	87.4
16-Jan-15	13:00	Fine	010846	2.7805	2.7893	19297.71	19298.71	1.00	1.23	1.23	1.23	74	119.1
16-Jan-15	14:20	Fine	011020	2.7298	2.7434	19298.71	19299.71	1.00	1.16	1.16	1.16	70	194.8
22-Jan-15	13:00	Fine	010845	2.7533	2.7604	19323.71	19324.71	1.00	1.23	1.23	1.23	74	96.1
22-Jan-15	14:06	Fine	010877	2.7612	2.7676	19324.71	19325.71	1.00	1.16	1.16	1.16	70	91.7
22-Jan-15	15:11	Fine	010880	2.7746	2.7817	19325.71	19326.71	1.00	1.16	1.16	1.16	70	101.7
28-Jan-15	9:22	Cloudy	010875	2.7616	2.7670	19350.71	19351.71	1.00	1.20	1.20	1.20	72	75.3
28-Jan-15	10:30	Cloudy	010851	2.7856	2.7916	19351.71	19352.71	1.00	1.20	1.20	1.20	72	83.6
28-Jan-15	13:00	Cloudy	010854	2.7691	2.7770	19352.71	19353.71	1.00	1.20	1.20	1.20	72	110.1



Graphic Presentation of 1 hour TSP Result

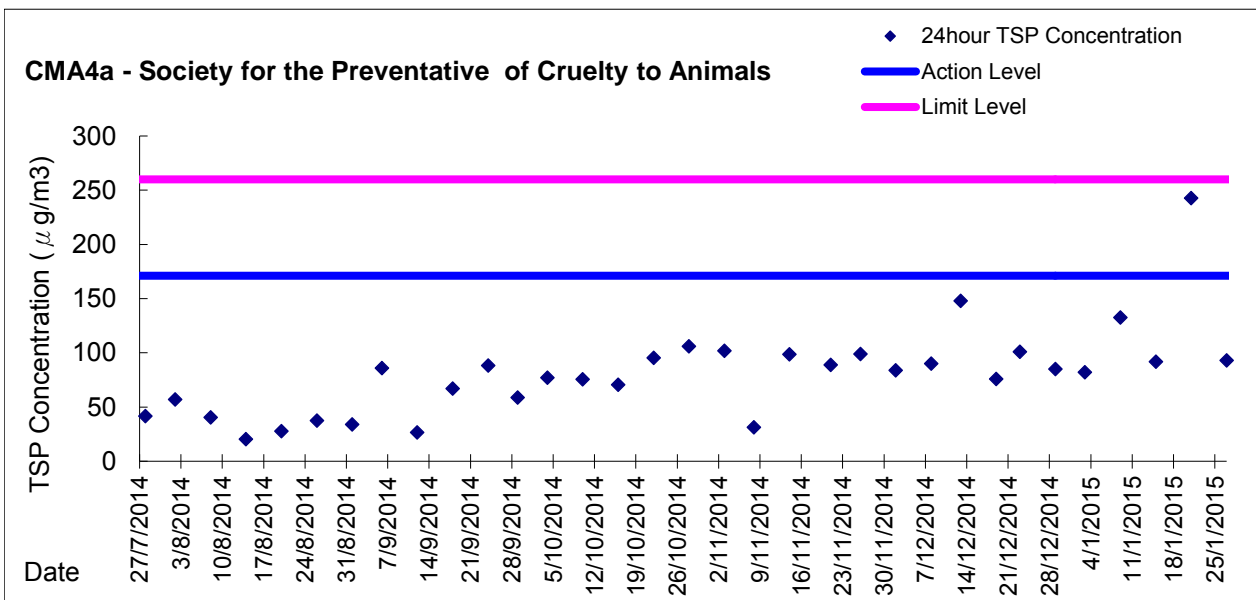
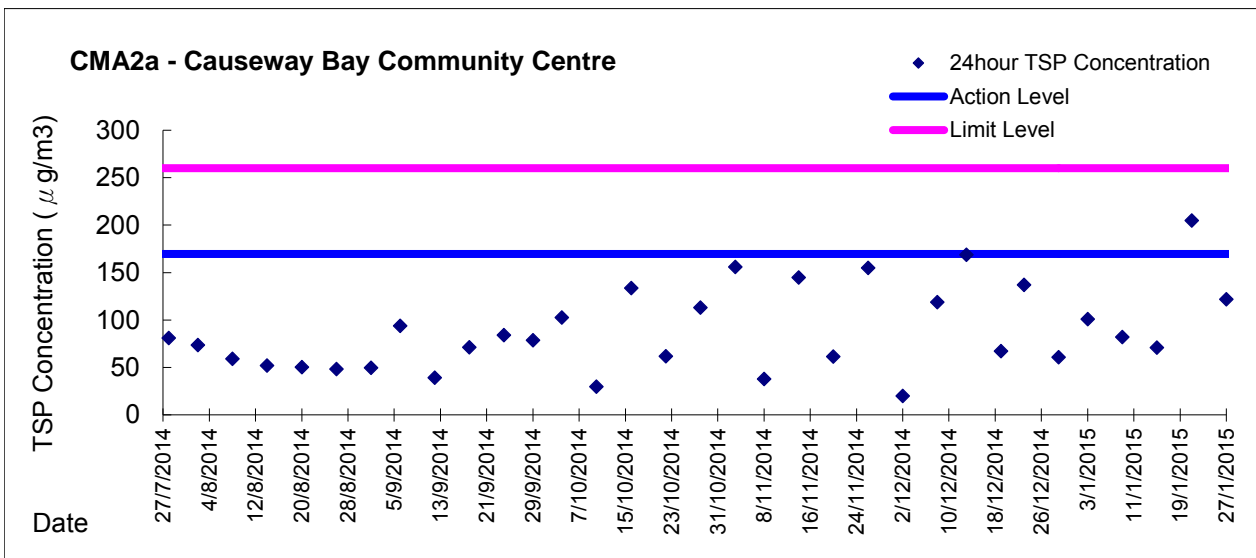
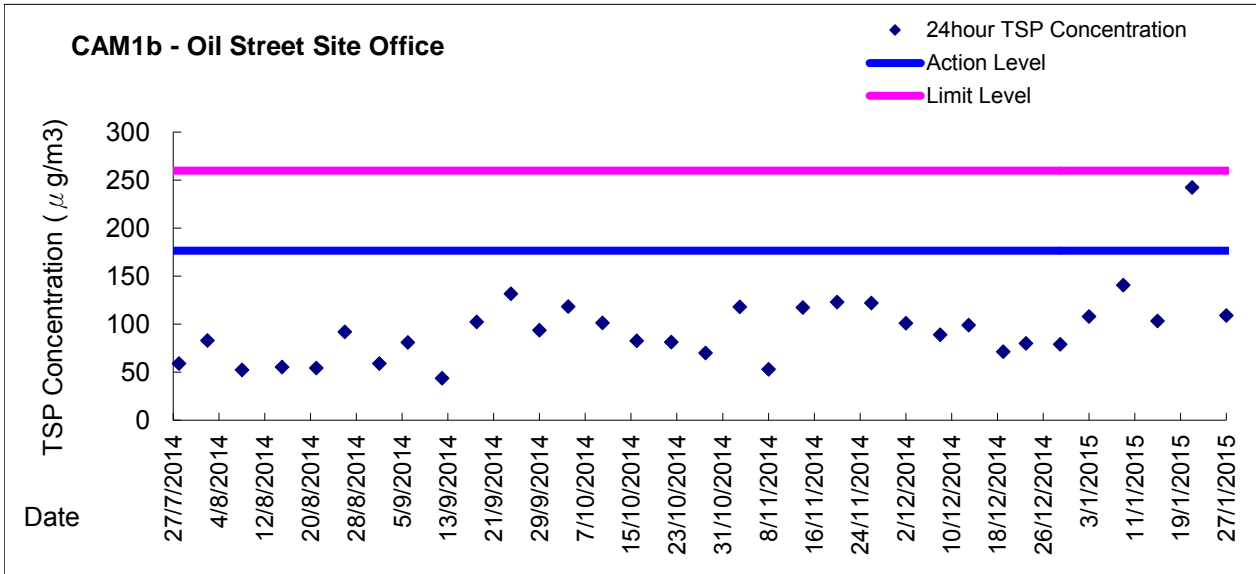


Graphic Presentation of 1 hour TSP Result





Graphic Presentation of 24 hour TSP Result





Graphic Presentation of 24 hour TSP Result

